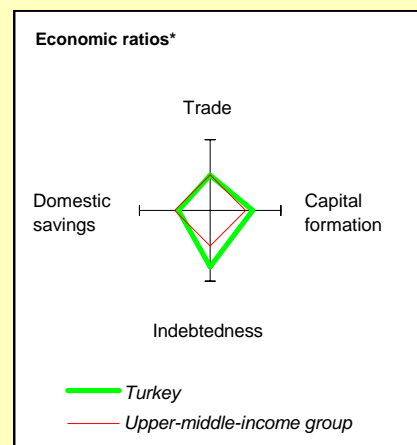
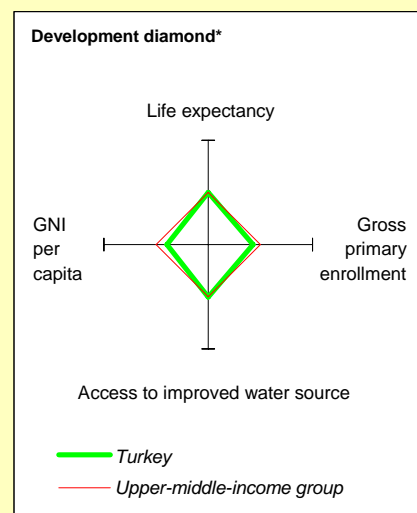


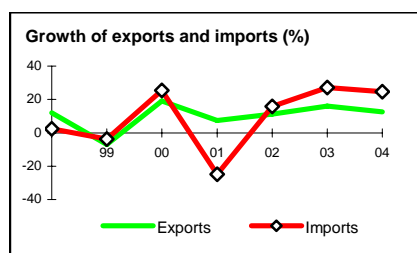
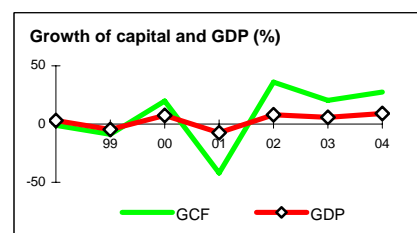
Turkey at a glance

9/19/05

	Turkey	Europe & Central Asia	Upper-middle-income		
POVERTY and SOCIAL					
2004					
Population, mid-year (millions)	71.3	472	576		
GNI per capita (Atlas method, US\$)	3,770	3,290	4,770		
GNI (Atlas method, US\$ billions)	269.0	1,553	2,748		
Average annual growth, 1998-04					
Population (%)	1.5	-0.1	0.8		
Labor force (%)	2.2	-0.5	-0.9		
Most recent estimate (latest year available, 1998-04)					
Poverty (% of population below national poverty line)		
Urban population (% of total population)	67	64	72		
Life expectancy at birth (years)	69	68	69		
Infant mortality (per 1,000 live births)	33	29	24		
Child malnutrition (% of children under 5)	8		
Access to an improved water source (% of population)	93	91	93		
Literacy (% of population age 15+)	88	97	91		
Gross primary enrollment (% of school-age population)	91	101	106		
Male	95	103	108		
Female	88	101	106		
KEY ECONOMIC RATIOS and LONG-TERM TRENDS					
	1984	1994	2003	2004	
GDP (US\$ billions)	59.9	129.7	240.4	302.8	
Gross capital formation/GDP	16.2	21.5	22.8	25.7	
Exports of goods and services/GDP	15.6	21.4	27.4	28.9	
Gross domestic savings/GDP	..	22.5	19.5	19.9	
Gross national savings/GDP	16.4	25.3	19.1	19.9	
Current account balance/GDP	-1.9	2.0	-3.3	-5.1	
Interest payments/GDP	3.1	3.1	2.9	2.4	
Total debt/GDP	36.1	51.1	60.5	53.4	
Total debt service/exports	33.0	34.1	38.4	32.6	
Present value of debt/GDP	63.6	56.2	
Present value of debt/exports	211.1	181.9	
	1984-94	1994-04	2003	2004	2004-08
<i>(average annual growth)</i>					
GDP	4.5	3.1	5.8	8.9	5.0
GDP per capita	2.3	1.4	4.3	7.5	3.7
Exports of goods and services	6.8	11.1	16.0	12.5	5.7



	1984	1994	2003	2004
STRUCTURE of the ECONOMY				
<i>(% of GDP)</i>				
Agriculture	21.6	16.0	13.4	12.9
Industry	25.0	31.4	21.9	22.4
Manufacturing	16.4	20.2	13.3	13.9
Services	53.4	52.6	64.7	64.7
Household final consumption expenditure	79.6	65.9	66.6	66.9
General gov't final consumption expenditure	8.3	11.6	13.6	13.2
Imports of goods and services	19.7	20.4	30.7	34.7
	1984-94	1994-04	2003	2004
<i>(average annual growth)</i>				
Agriculture	1.4	1.0	-2.4	2.0
Industry	5.7	2.4	5.0	8.8
Manufacturing	6.1	3.4	8.4	10.1
Services	3.9	3.3	6.4	8.3
Household final consumption expenditure	3.9	2.3	7.1	10.1
General gov't final consumption expenditure	3.5	3.5	-2.4	0.5
Gross capital formation	5.0	3.0	20.4	27.4
Imports of goods and services	9.2	9.1	27.1	24.7

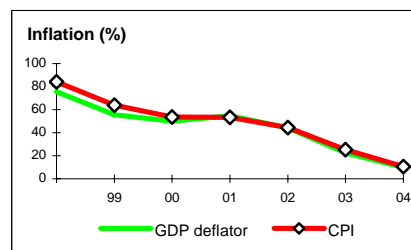


Note: 2004 data are preliminary estimates.

* The diamonds show four key indicators in the country (in bold) compared with its income-group average. If data are missing, the diamond will be incomplete.

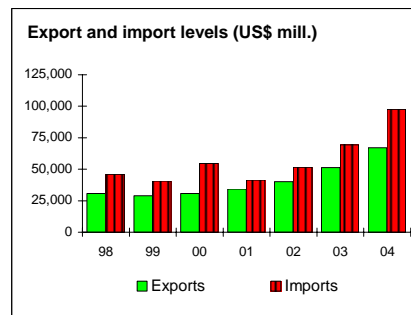
PRICES and GOVERNMENT FINANCE

	1984	1994	2003	2004
Domestic prices (% change)				
Consumer prices	..	106.3	25.3	10.6
Implicit GDP deflator	48.2	106.5	22.5	9.9
Government finance (% of GDP, includes current grants)				
Current revenue	..	21.4	39.6	39.9
Current budget balance	..	-1.2	-5.8	-2.0
Overall surplus/deficit	..	-7.5	-9.1	-4.8



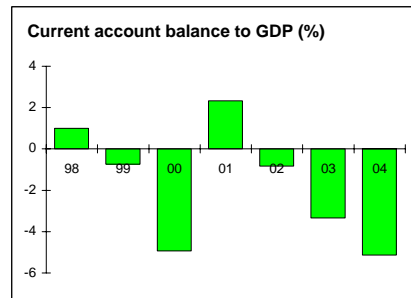
TRADE

	1984	1994	2003	2004
<i>(US\$ millions)</i>				
Total exports (fob)	7,389	18,106	51,206	67,001
Agricultural and livestock	896	1,066	2,201	2,645
Mining and quarry products	239	263	469	649
Manufactures	6,254	16,777	44,378	59,533
Total imports (cif)	10,757	23,270	69,340	97,540
Food	359	658	404	528
Fuel and energy	3,887	3,771	11,568	14,400
Capital goods	2,675	5,323	11,326	17,397
Export price index (2000=100)	107	114	105	122
Import price index (2000=100)	118	105	106	120
Terms of trade (2000=100)	91	108	99	102



BALANCE of PAYMENTS

	1984	1994	2003	2004
<i>(US\$ millions)</i>				
Exports of goods and services	9,546	29,182	70,231	91,029
Imports of goods and services	11,340	26,297	73,736	102,180
Resource balance	-1,794	2,885	-3,505	-11,151
Net income	-1,440	-3,264	-5,559	-5,519
Net current transfers	2,082	3,010	1,027	1,127
Current account balance	-1,152	2,631	-8,037	-15,543
Financing items (net)	1,086	-2,085	12,084	16,367
Changes in net reserves	66	-546	-4,047	-824
Memo:				
Reserves including gold (US\$ millions)	3,899	16,519	44,957	53,649
Conversion rate (DEC, local/US\$)	367	29,818	1,496,668	1,421,835



EXTERNAL DEBT and RESOURCE FLOWS

	1984	1994	2003	2004
<i>(US\$ millions)</i>				
Total debt outstanding and disbursed	21,608	66,250	145,367	161,801
IBRD	2,358	5,195	5,214	6,153
IDA	181	136	83	77
Total debt service	3,223	10,259	27,808	30,506
IBRD	325	1,218	719	767
IDA	4	7	7	7
Composition of net resource flows				
Official grants	90	175	150	160
Official creditors	1,061	-605	541	758
Private creditors	277	-30	4,959	6,687
Foreign direct investment (net inflows)	113	559	1,254	1,874
Portfolio equity (net inflows)	0	1,059	1,133	6,064
World Bank program				
Commitments	794	250	300	1,586
Disbursements	628	343	276	1,499
Principal repayments	129	806	502	586
Net flows	500	-463	-226	913
Interest payments	200	419	224	189
Net transfers	299	-882	-450	724

